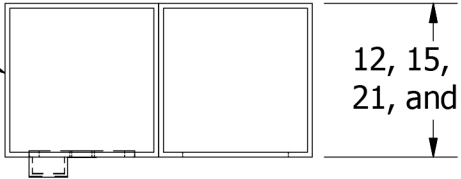


48" High 2 Tier  
Jorgenson Plastic Locker

$\frac{3}{8}$ " Thick Body Panels  
and Shelf

12, 15, 18,  
21, and 24"



Aluminum No. Plate

Ventilation Slots

ADA Compliant Injection  
Molded Plastic Handle

Heavy Duty 18 Ga.  
Full-length Stainless  
Steel Piano Hinge

$\frac{1}{2}$ " thick door

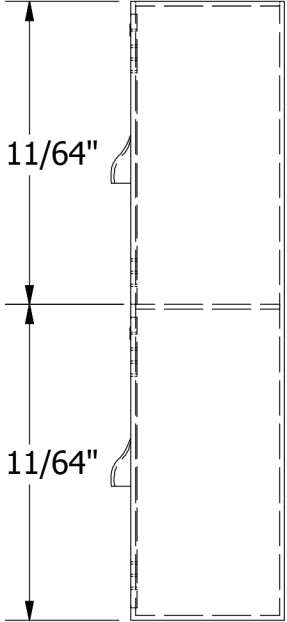
Door Removed

48  $\frac{11}{32}$ "

12, 15, or 18"

24  $\frac{11}{64}$ "

24  $\frac{11}{64}$ "



Allow  $\frac{1}{16}$ " growth per frame

Jorgenson Lockers  
1239 South 700 West  
Salt Lake City, UT 84104  
101 Johnston Circle  
Palmetto, GA 30268

**Jorgenson Lockers**  
A div. of Jorgenson Industrial Companies  
STRONG on Customer Service 877-952-0151